

ONE
YEAR
WARRANTY!

NEGATIVE PRESSURE UNITS

TROOPER Series



TR-400

Can't shut down to fix that leaking mold? ADVANTAGE TROOPER negative pressure units work with your central plant chilled or tower water to convert positive pressure from these systems to negative pressure within the cooling channels of the mold. Negative pressure allows air to enter the cooling channel to prevent water from leaking out... air is vented from the unit through an automatic purge device.

PROCESS TEMPERATURES:

- 20°F to 180°F

AVAILABLE PROCESS PUMP HP:

- 1/2 to 2

AVAILABLE PROCESS PUMP GPM:

- 7.2 to 52

STANDARD DIMENSIONS:

- 28" x 24" x 14" (HxWxD)
for TR-100, 200 and 400 models
- 28" x 36" x 14" (HxWxD)
for TR-300, 350 and 500 models

FEATURES - AT A GLANCE:

- Rugged steel cabinetry
- To and from mold pressure gauges
- Supply and return pressure gauges
- Bronze pressure reducing valve
- Water inlet strainer
- 1 year warranty



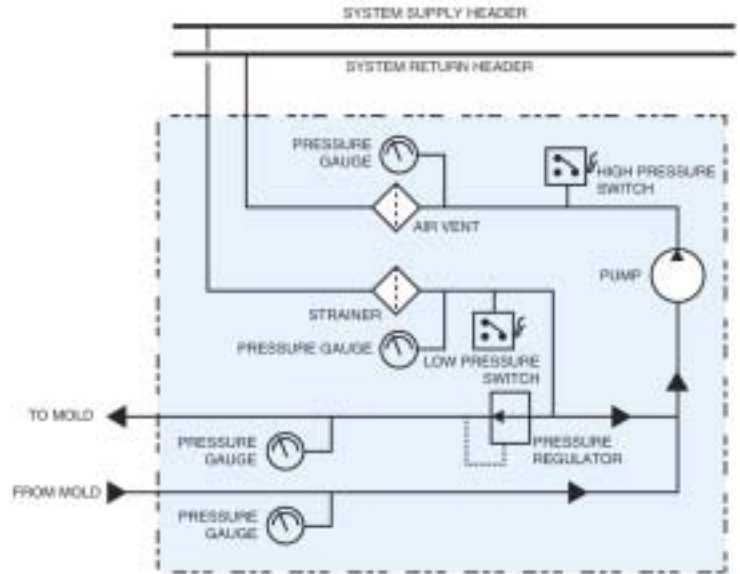
SPECIFICATIONS

TROOPER SPECIFICATIONS	TR-	100	200	300	350	400	500
WEIGHT	Pounds	120	120	120	210	221	250
DIMENSIONS	Height	27½	27½	27½	27½	27½	27½
	Width	24	24	36	36	24	36
	Depth	14	14	14	14	14	14
PUMP	HP	½	½	¾	1½	1	2
FLOW	GPM	7.2	9.2	14.6	14.8	24	52
PRESSURE	PSI	100	40	40	150	40	40
FULL LOAD AMPERAGE @ 3Ø/60HZ	230 volt	2.5	2.5	3.5	6.5	4.5	8.5
	460 volt	1.3	1.3	1.8	3.3	2.3	4.3
CONNECTION SIZE	Inches	¾	¾	¾	¾	1	1¼

The TR-200 and TR-400 units are normally in stock in Sandy Hook, CT. All Troopers are shipped from Sandy Hook, CT.



SCHEMATIC



STANDARD FEATURES

FRAME and CABINET CONSTRUCTION:

- Rugged pressed steel
- Painted
- Portable, on casters
- Easy access service panels
- Small footprint - compact

COOLANT CIRCUIT:

- Bronze pressure reducing valve

- Water inlet strainer
- All copper and bronze piping
- Automatic air purge
- Standard NPT process fittings

SYSTEM SAFETY DEVICES:

- Low supply pressure shut off with indicator
- High return pressure shut off with indicator

- ## PRESSURE GAUGES:
- To mold pressure
 - From mold pressure
 - Supply pressure
 - Return pressure

ELECTRICAL:

- Phase monitor relay
- IEC motor starter
- Master on/off switch
- Fused control transformer
- Power entry terminal block

- Fused transformer
- Available 230/460/3/60

WARRANTY:

- 1 year

SERVICE and WARRANTY... The Trooper is supported by a comprehensive factory warranty. Refer to bulletin ADV-205 for complete warranty details. The **ADVANTAGE** service department is staffed with experienced technicians, and supported by a network of independent service contractors. With **ADVANTAGE**, service is just a phone call away.



since 1977

ADVANTAGE PRODUCTS: TEMPERATURE CONTROLLERS • PORTABLE CHILLERS • CENTRAL CHILLERS • PUMP TANK STATIONS • TOWER SYSTEMS • FILTERS

ADVANTAGE ENGINEERING, INC. 525 East Stop 18 Road Greenwood, IN 46142 phone: 317-887-0729 fax: 317-881-1277

web site: <http://www.AdvantageEngineering.com> email: sales@AdvantageEngineering.com ©2003 ADVANTAGE ENGINEERING, INC. Form #ADV-386 11/02 updated 6/030

SINCE PRODUCT INNOVATION AND IMPROVEMENT IS OUR CONSTANT GOAL, ALL FEATURES AND SPECIFICATIONS ARE SUBJECT TO CHANGE WITHOUT NOTICE OR LIABILITY.