

PRESS RELEASE

June 22, 2009

New Z Control Helps Significantly Reduce Costs While Improving Quality and Productivity

[NPE 2009, Chicago, IL] ... Sumitomo (SHI) Plastics Machinery (America) LLC (SHI-PM) introduced to the North American market today the new Z Control for its SE-DUZ direct-drive, SE-HDZ high-duty and SE-HSZ high-speed all-electric machine series.

The Z Control is an easy-to-use PC-based control that provides a new level of molding precision with low-pressure filling and reduced clamp force. It combines the advantages of Sumitomo’s popular N-Series controls with new systems and capabilities to help molders achieve zero-defect molding and optimum machine performance.

“The shift in focus to low-pressure filling and reduced clamp force is significant, as are the combined benefits in precision, part cost and overall productivity,” said Jim Mitchell, Executive Vice President. “In addition to the two machines equipped with the Z Control in our booth, we are also providing instructional sessions on this important new control capability.”

At the heart of the Z Control are three new systems:

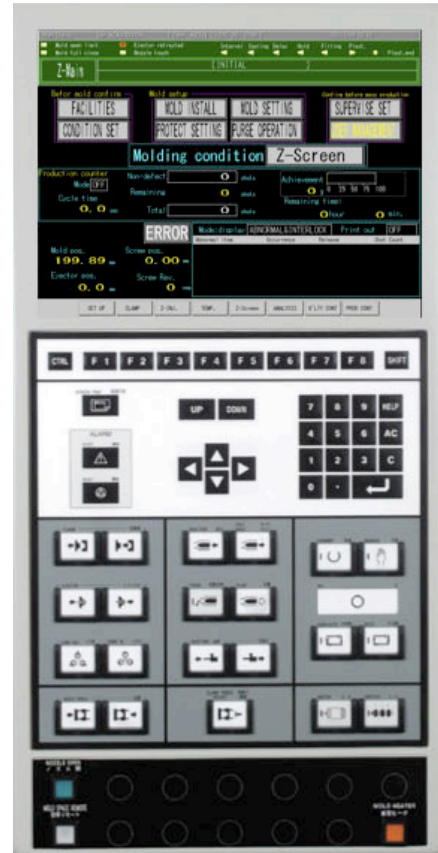
- The patent-pending Flow Front Control (FFC) System
- The Minimum Clamping Molding (MCM) System
- The Simple Process Setting (SPS) System

Patent Pending Flow Front Control System

The Flow Front Control (FFC) System optimizes the flow front, further allowing control of low internal pressures inside the cavities. This system:

- Takes advantage of the viscoelastic properties of the resin — visco (creep) and elasticity (recovery or pull back) — and allows
-

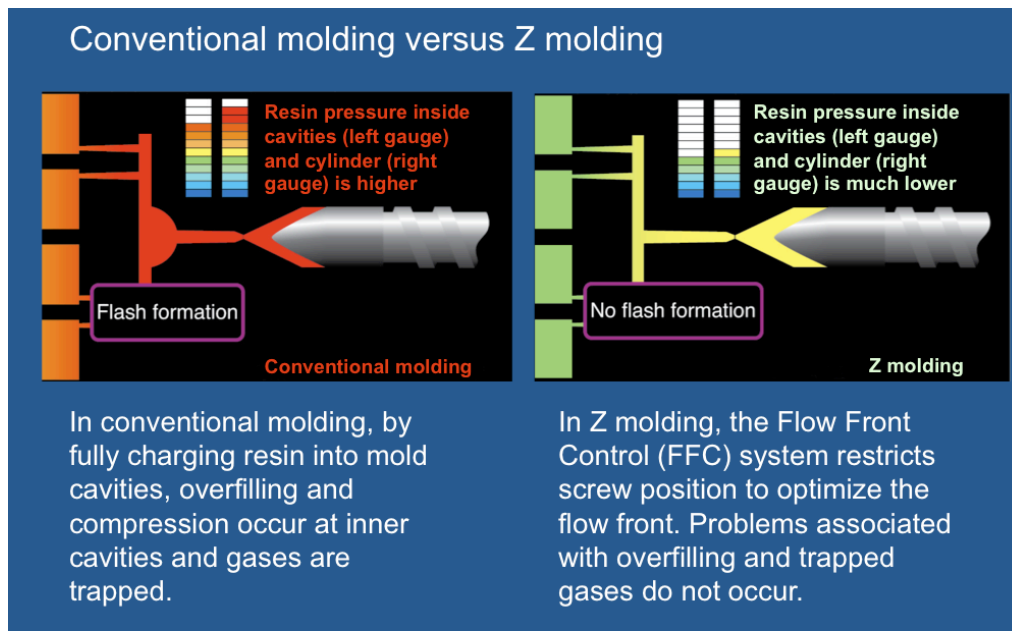
Sumitomo (SHI) Plastics Machinery (America), LLC
1266 Oakbrook Drive, Norcross, GA 30093 • Tel: (770) 447-5430 • Fax: (770) 441-9168
www.sumitomoPM.com



The Z Control is only available on SE-DUZ, SE-HDZ and SE-HSZ all-electric machines.

[New Z Control...continued...Page Two]

- complete filling without flash
- Provides precision control of screw position to ensure consistent filling, shot-to-shot
- Avoids overfilling, allowing gases to be released and preventing short shots



Diagrams compare resin pressure inside the cavities and cylinder in Conventional versus Z molding.

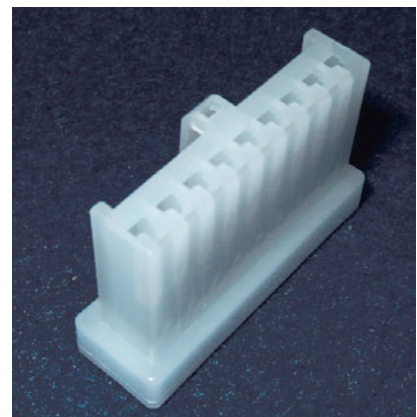
Minimum Clamping Molding (MCM) System

Precision clamp force detection (tie-bar-mounted strain gauge sensor) and the feedback control capabilities of the Minimum Clamping Molding (MCM) System determine the minimum force required at mold touch. Using this system can avoid excessive clamp force which can result in mold deformation and poor release of gases.

The MCM also works together with the machine's Clamp Force Correcting System to compensate for the thermal expansion of the mold. This feedback system uses a sensor mounted on the tie bar (strain gauge that measures actual clamp tonnage) and a high precision rotary encoder to keep clamping force constantly stable, even at low clamp force settings.

The ability to mold at lower clamp force provides numerous advantages:

- Improved release of gases helps avoid burn spots and short shots

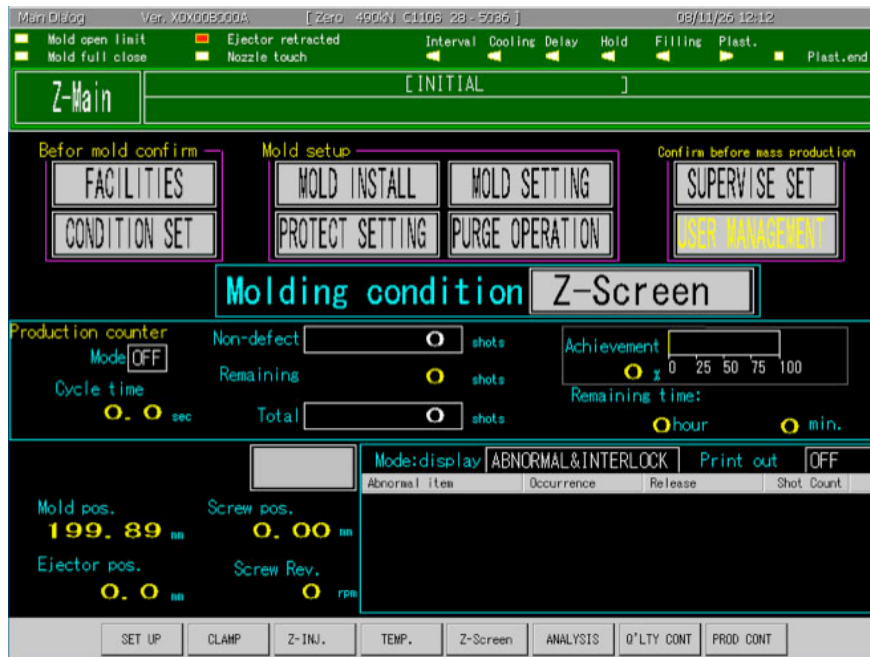


In testing on this connector application, Flow Front Control capability allowed pressure inside the cavities to be reduced by nearly 50%. This reduction in turn allowed significant reduction in the clamping force.

[New Z Control...continued...Page Three]

- Less trapped gases also reduces the frequency for mold maintenance
- Lower clamp force can also reduce power consumption, improve cycle time and in some cases allow molds to be run on lower tonnage machines

Simple Process Setting (SPS) System



Simple Process Setting (SPS) arranges settings by process from the operator's point of view.

The Z Control's Simple Process Setting (SPS) System allows easy setup and operation while helping the operator avoid oversights and mistakes. Key advantages of the SPS System include:

- Settings are arranged by process from the operator's point of view
- One Process = One Screen
- SPS reduces screen switching for mold setup and purging by 68%
- Avoiding operator error reduces part quality problems, mold damage and scrap

More Good Parts at Less Cost

The chart on the following page summarizes the ways that the Z Control can help molders realize more good parts at less cost.

[New Z Control...continued...Page Four]

System	Feature	Benefits	Result
Flow Front Control	No overfilling	Less resin	Less cost
	Lower pressure	Less power consumption	Less cost
	Lower pressure	Less mold maintenance and wear	Less cost
	No flash or short shots	Reduced defects, less resin	More good parts at less cost
Minimum Clamping Molding	Improved release of gases	No burn spots/short shots, reduced defects, less resin	Less cost
	Improved release of gases	Less mold maintenance and wear	Less cost
	Less mold maintenance	Less downtime /labor/supplies	Less cost
	Reduced clamp force	Less power consumption	Less cost
	Reduced clamp force	Improved cycle time	More good parts at less cost
	Running molds on lower tonnage machines	Less overhead	Less cost
Simple Process Setting	Less operator error	Less scrap	More good parts at less cost
	Easier setup	Less setup time	More good parts at less cost

In addition to the new systems, the Z Control features a 12.1-inch, full-color, TFT flat display with touch-screen capability, plus a USB port, serial port and parallel port and five independent machine status signals (selectable from 24 possible signals) that are available for output. The USB port can be used for print screen function and to download molding process, logging, analysis, and history data. SPC/QC capabilities include: storage of data on 100,000 shots for downloading; display of the last 500 shots; and the addition of various charting capabilities including histograms and dispersion diagrams. For visual trending over time, the capability to store and view molding profiles for the last 1000 shots is provided. Plus, with 4 added data channels, 8 selectable parameters can be graphically displayed on a single screen.

Machine optimization capabilities, such as easy ramping programs,

[New Z Control...continued...Page Five]

assist molders in decreasing cycle times and increasing productivity.

Additional information on Sumitomo Plastics Machinery's products and services can be found at **www.sumitomopm.com**.

Sumitomo (SHI) Plastics Machinery (America), LLC, headquartered in Norcross, GA, and Demag Plastics Group Corp., headquartered in Strongsville, OH, are affiliated companies of Sumitomo Heavy Industries Ltd., Plastics Machinery Division. The company has the world's largest platform of advanced all-electric machines which spans from 8 to 606 US tons including micro to mid-sized, high-speed, high-duty, vertical, insert, multi-shot and disc molding machine series. Ultra-high-speed hybrid machines are offered for packaging and other thin-wall applications, plus high-performance configurable hydraulic-toggle machines are offered up to 2200 US tons.

[END]

PR Contact: Susan Hunt Levin
PH: (216) 932-3168